

Réseau National des Chambres d'Agriculture du Niger (RECA) et partenaires



Mars 2018

Jan tattau ko lalaba da turawa ke cema : acarien rouge



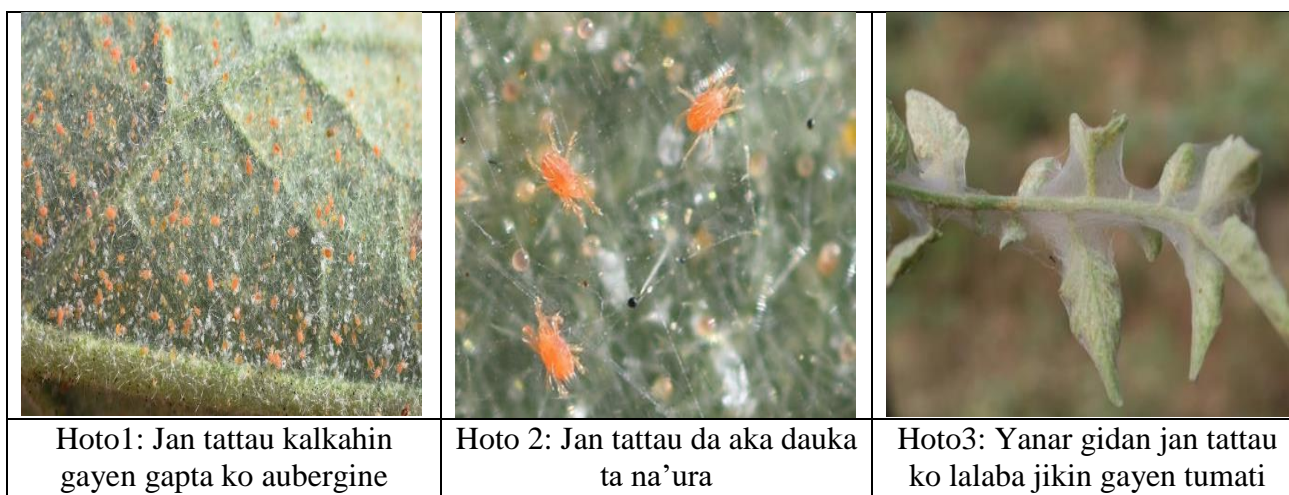
Yau zamu baku labarin wata karamar hallita aman ana iya ganinta ido da ido, wanan hallita ita ce jan tattau ko lalaba.

Manoma sun san wanan tsutsar tunda tana saka gidan tane saman ganyen shipkokin gapta ko aubergine, tumati, tattasey, tashi da dankalin turawa.

Wannan tsutsar na boyewa kalkashin ganyen shipkoki, manoma sun santa sosai domin a cikin lokaci kalilan take hallaka gona ga baki daya musaman ma in shipkokin dake cikin gonar sun danganta da wanda muka zana can sama.

Yaya ake gane kasancewar lalaba ko jan tattau a cikin gona?

- Idan gonar ta kamu da sabo to da wuya a gane cewar jan tattau ko lalaba ne ya apka mata saboda kanatar tsutsar; kenan sai an maida hankali wajan duba kalkashin ganyen tunda nan ne za'a lura da wasu kananan kwari jajaye dake motsi jikin ganyen kamar yadda kuke gani jikin hoton na sama (hoto1) ;
- Haka zalika ana iya ganin wata karamar yanar gidan tattau bayan anyi ban ruwa kamar yadda kuke gani a jikin hoto na uku (hoto3); wanan yanar ita ke kare jan tattau ko lalaba daga iska da kuma magugunan da manoma ke zubawa don kashe miyagun kwari.



- Jan tattau na samun abinci ne jikin gayen tumatin da yake tsotsewa. Daga bisani sai wasu kananan tambuna farare su bayana a wuraren kamar yadda kuke gani a jikin hoto na (hoto4). Gayen sai ya koma kore ko fari (hoto5).

		
Hoto 4 : Kamuwar farko, gayen ya badda launin nashi na kore	Hoto 5: Gayen ga baki daya ya koma fari	Hoto 6: Gidajen lalaba sun mamaye gayen shipkokin dake cikin gona

- Wani gungun jan tattau ko lalaba jikin gaye bayan an girbe albarkatun noma.

Wane irin shipkoki ne jan tattau ke ci?

- Jan tattau na unfani da gayen shipkoki da dama harma da ciyawa banza, a bangaren gayen shipkokin da ake unfani dasu yahi bukatar ganyen gapta ko aubergine, na dankalin turawa, yalo, tumati, tattasey da na tashi.
- In bannar tayi tsanani shipkar duka ke kamuwa, ga baki daya yannar gidan tattau ke dabaibaye ilahirin ganyen dake faduwa ko kuma ya bushe.

Da wane lokaci ne lalaba ko jan tattau ke bayana kuma a kasar Nijar ina da ina ake ganin shi?

- Jan tattau ya mamaye kasar Nijar ga baki daya, ana ganin shi a ko wane lokaci ko rani ko damana;
- Aman yafi bukatar zahi da rani saboda a lokacin nan yafi bana diyawa;
- Jan tattau kan iya boyewa lokaci mai tawo kalkahin kasa ko kuma cikin matacen ganye lokacin da babu wani abunda zai ci;
- Da zarar ya samu abinci kuma yayi daidai da lokacin zahi to nan da nan sai yayi ta aifuwa. Maccen jan tattau ko lalaba na iya aifuwar koye 100 zuwa 200 wanda bayan sati guda da kyinkyeshewa ke komawa cikakun jan tattau ko lalaba wanda Kuma a cikin lokaci kalilan ke cigaba da ayyayafa;
- Yaduwar wanan jan tattau ta danganta da iska da kuma zuwa da zowar manomi cikin gonnakai.

Hanyoyin yaki da jan tattau ko lalaba?

Jan tattau ko lalaba na rayuwa ne kalkashin ganye kuma yana kare kanshi ne ta hanyar wanan yanar da yake sakawa kenan da wuya a yake shi da magungunan kashe kwari na zamani, dole sai an gama da wasu dubaru da kuma rigakahi wanda kamar yadda hausawa ke cewa yafi magani.

- Rigakahi na farko shi ne kashe lalaba ko jan tattau dake rayuwa cikin sauran shipkoki saboda ko bayan an ida noma an girbe albarkatun an tsaida ban ruwa shipkoki sun bushe, shi wannan jan tattau yana nan kuma zai iya rayuwa tsawon wattani da dama har sai lokacin da manomi zai sake wani sabuwon aikin gandari.
- Kenan da zarar ya girbe albarkatun noma to manomi yayi gagawar fidda ciyawa dake cikin gonar ya toya ko kuma yaba dabbobi su ci, wanan kwakwaran hanya ce da ta kamata manoma su bi domin kubutar da gonankan su daga jan tattau ko lalaba, ko da yake yawancin manoman basa bin ta. Tsohuwar shipkar gapta ko aubergine da manoma ke bari da rani har ta kai lokacin damina na iya zama matatarar jan tattau ko lalaba, ya kamata manomi ya cicire su idan lokaci yayi sai ya dasa sabo.
- Indai jan tattau ya bayana a cikin gona, to kada kuyi rainon iri ko na dashe a cikin inuwa wato kalkashin itace saboda daga nan ne kamuwar take farawa, kenan manoma ayi hattara a kula da bangaren gonar dake cikin inuwa wato kalkashin itace fiye da sauran gonar.
- Manoma ku kewaye renon irin da sange don kare shi daga jan tattau ko lalaba.
- Idan jan tattau ya saba shiga gonar ku to ya kamata manoma ku kula da tsaptace filayen noman musamen ma bangaren da yake hadawa da shipka su gapta, tumati, dankalin turawa da sauran su.
- Aiki cikin fadama na hada manoma da dama; da zarar wani ya lura da jan tattau ya apkama gonar shi har ya kai ga barin aikin noma to ya kamata yayi, gaggawar cire shipkokin kuma ya kona su don kar ya goga ma manoma yan uwan shi .Wanan aikin dai ya kamata manoman suyi shi tare kuma kowane manomi ya kiyaye.
- manoma ku rinka kewaye gonar ku saboda wanan kewayen na kare gonar daga iskan dake iya baza jan tattau ko lalaba a cikin gonar.

Idan kuma wannan kariyar bata raba ku ba da wannan jan tattau, to ya zama wajibi ku zuba magani wanda aka yi da diyan milli ko dogon yaro tun bayanar shi ta farko a cikin gonar. idan gonar ku na fama da barazanar jan tattau a kowace shekara, to sai ku rinka zuba maganin na diyan milli da zarar kun ida dashen iri.

In kuma bannar tayi kamari to sai kuyi unfani da magugunan zamani kamar masu kashe jan tattau ko lallaba daidai gologondon da ya dace ayi aiki da shi.

A jamhuriyyar nijar, a cikin kasuwani, a kalla ana samun iri biyu na maganin da akayi daga abamectine wanda suka hada da bomec da acarius ko da yake ba kulum bane ake samun su ba a cikin kasuwanni ba.

Bayan sawa uku ya kamata manomi ya sauya wani magani don kar jan tattau ko lalaba ya bijirema maganin domin idan jan tattau ya saba da maganin ba zaiyi tasiri a kan shi ba kenan manoma ayi hattara a rinka sauya magani lokacin zuwa lokaci.

Bayan bomec da acarius da kuma magugunan galgajiya wanda ake hadawa da diyan milli ko dogon yaro, akoye wasu maguguna masu tasiri kwari da gaske, wanda ya kamata manomi ya maida hankali wajan saka su a cikin gonar saboda idan ba a bi kai'idodi ba to fa zasu zama wata hanyar yaduwar jan tattau ko lalaba.

Idan kuna bukatar Karin bayani to sai ku tuntubi mashawartan nan na kugiyoyin **RECA** da **CRA** kan **92 24 24 24** (Orange) ; **89 97 97 74** (Airtel) ;

84 74 74 74 (Moov) ; **93 32 38 92** (Niger-telecom) ;

Ko kuma whatsapp a kan **92 24 24 24** (Orange) ko kuma a kan **89 97 97 74** (Airtel).

Wanan layoyin dai kugiyoyin **RECA** da **CRA** ne suka tanadar muku su don waye muku kai kan ayyukan ku na noman gandari.

Cette note est la traduction d'une note technique préparée par des techniciens du Réseau National des Chambres d'Agriculture (RECA), de l'Institut National de la Recherche Agronomique et de la Chambre Régionale d'Agriculture de Tillabéri. Elle a été réalisée avec l'appui financier du Projet d'Appui à l'Agriculture Sensible aux Risques Climatiques (PASEC).